

Population Distribution

Total Population by Barangay

The City of General Trias is subdivided into 33 barangays. As presented in Table 1, the most populous barangays are San Francisco, Pasong Camachile II, Pasong Kawayan II, Santiago and Navarro. On the other hand, the least populous barangays having less than 1,000 population are Gov. Ferrer, 1896th, Prinza, Arnaldo, Sampalucan, Bagumbayan, Dulong Bayan and Vibora.

There is a large disparity in population among the barangays of the City of General Trias. The total population has grown in San Francisco as much as 83,629 while Gov. Ferrer only has 248 total population. The five most populous barangays already account for more than half or 59.53% of the total population of the City.

A total of 21 barangays recorded an increase in population. Conversely, the population in the remaining 12 barangays decreased which include three (3) of the least populated barangays – Gov. Ferrer, 1896th and Prinza. Moreover, this trend has been consistent since the period between 2010 and 2015 and continued until 2020. And based on Table 2, the ratio of male and female are almost evenly distributed where the city has a larger percentage of females (50.85%) as compared to males (49.15%).

Table 1. Total Population and Percent Change by Barangay, 2010-2020

Barangay	Total Population			% Increase/ Decrease (2015-2020)
	01 May 2010	01 Aug 2015	01 May 2020	
1896 th	592	531	381	-28.25
Alingaro	2,800	3,755	4,872	+29.75
Arnaldo	917	975	697	-28.51
Bacao I	5,366	5,981	15,893	+165.72
Bacao II	6,762	7,646	8,944	+16.98
Bagumbayan	1,060	1,044	848	-18.77
Biclatan	11,358	14,703	23,102	+57.12
Buenavista I	3,194	5,593	7,274	+30.06
Buenavista II	7,244	9,902	11,348	+14.60
Buenavista III	5,982	8,047	9,139	+13.57
Corregidor	1,139	1,137	1,121	-1.41
Dulongbayan	901	912	908	-0.44
Gov. Ferrer	312	276	248	-10.14
Javalera	5,095	5,370	6,267	+16.70
Manggahan	13,482	15,636	19,763	+26.39
Navarro	7,526	14,763	48,105	+225.85
Panungyanan	2,430	2,891	3,746	+29.57
Pasong Camachile I	17,260	19,906	21,493	+7.97

Barangay	Total Population			% Increase/ Decrease (2015-2020)
	01 May 2010	01 Aug 2015	01 May 2020	
Pasong Camachile II	20,942	31,306	40,441	+29.18
Pasong Kawayan I	3,358	3,918	7,076	+80.60
Pasong Kawayan II	17,135	27,661	56,842	+105.50
Pinagtipunan	6,312	6,809	6,917	+1.59
Prinza	675	740	513	-30.68
Sampalucan	1,083	1,144	756	-33.92
San Francisco	63,877	74,344	83,629	+12.49
San Gabriel	1,913	1,996	1,593	-20.19
San Juan I	4,951	5,386	5,221	-3.06
San Juan II	3,634	4,971	6,903	+38.87
Sta. Clara	3,510	3,495	3,365	-3.72
Santiago	13,177	22,727	39,204	+72.50
Tapia	2,553	2,643	4,914	+85.93
Tejero	5,756	7,024	8,148	+16.00
Vibora	1,026	1,071	912	-14.85
Total	243,322	314,303	450,583	+43.36

Source: Philippine Statistics Authority, 2020 Census of Population and Housing

Table 2. Total Population by Barangay and Sex, 2020

City/Barangay	Total Population		
	Male	Female	Total
1896 Pob. (Bgy. 8)	189	192	381
Alingaro	2,430	2,442	4,872
Arnaldo Pob. (Bgy. 7)	349	348	697
Bacao I	7,778	8,115	15,893
Bacao II	4,697	4,247	8,944
Bagumbayan Pob. (Bgy. 5)	388	460	848
Biclatan	11,488	11,614	23,102
Buenavista I	3,497	3,777	7,274
Buenavista II	5,638	5,710	11,348
Buenavista III	4,404	4,735	9,139
Corregidor Pob. (Bgy. 10)	543	578	1,121
Dulong Bayan Pob. (Bgy. 3)	452	456	908
Gov. Ferrer Pob. (Bgy. 1)	112	136	248
Javalera	3,016	3,251	6,267
Manggahan	10,064	9,699	19,763
Navarro	23,008	25,097	48,105
Panungyanan	1,864	1,882	3,746
Pasong Camachile I	10,339	11,154	21,493
Pasong Camachile II	19,728	20,713	40,441
Pasong Kawayan I	3,463	3,613	7,076
Pasong Kawayan II	28,114	28,728	56,842

Document Source: Comprehensive Land Use Plan, 2022-2030, Volume 3

City/Barangay	Total Population		
	Male	Female	Total
Pinagtipunan	3,353	3,564	6,917
Prinza Pob. (Bgy. 9)	272	241	513
Sampalucan Pob. (Bgy. 2)	370	386	756
San Francisco	41,433	42,196	83,629
San Gabriel Pob. (Bgy. 4)	734	859	1,593
San Juan I	2,592	2,629	5,221
San Juan II	3,506	3,397	6,903
Santa Clara	1,657	1,708	3,365
Santiago	19,559	19,645	39,204
Tapia	2,346	2,568	4,914
Tejero	4,087	4,061	8,148
Vibora Pob. (Bgy. 6)	426	486	912
City of General Trias	221,478	229,105	450,583

Note: Male and Female Population was derived from % ratio of the male and female of 2020-2021 CBMS

Source: Philippine Statistics Authority, 2020 Census of Population and Housing

Urban-Rural Household Population by Barangay

Household population excludes those which are enumerated in institutional households such as jails, detention centers, military camps, mental hospitals, drug rehabilitation centers and the like. The household population is extremely important for planning especially on housing and social welfare services.

In 2020, the total household population is 448,894, which is lesser than the total population by 1,689. On the other hand, the number of households have reached to 117,910 with an average household size of 3.80. This figure is the smallest average size within 25 years, specifically from 1995 to 2020. Also, the household size is much lower than the national average which is 4.1.

Table 3. Total Household Population, Number of Households and Household Size, 1995-2020

Year	Household Population	Number of Households	Household Size
1995	66,502	13,743	4.8
2000	107,077	23,299	4.6
2010	241,935	52,595	4.6
2015	313,604	80,142	3.9
2020	448,894	117,910	3.8

Source: Philippine Statistics Authority, 2020 Census of Population and Housing

The current household size decreased by 0.1 in the span of five years from 2015. One of the possible reasons for the decrease in household size can be the low birth rate with some association to the results of existing family planning program in the city. Comparing the percentage change between household population and number of households from 2015 to 2020, the number of households increased much higher (at 47%) than the household population (at 43%). One reason can be the dissolution of households along the increasing economic development. Extended families may have gained the capacity to acquire their own houses.

Document Source: Comprehensive Land Use Plan, 2022-2030, Volume 3

Moreover, distribution of household population by barangay is shown in Table 4. Barangay Buenavista I recorded a 4.20 the highest in household size while Barangay Arnaldo averages only 2.80 in size.

Table 4. Household Population by Barangay and Average Household Size, 2020

Province City/Municipality	Population	Household Population	Number of Household	Average Household size
City of General Trias	450,583	448,894	117,910	3.80
1896th Pob. (Bgy. 8)	381	381	123	3.10
Alingaro	4,872	4,872	1,188	4.10
Arnaldo Pob. (Bgy. 7)	697	697	248	2.80
Bacao I	15,893	15,893	4,555	3.50
Bacao II	8,944	8,944	3,001	3.00
Bagumbayan Pob. (Bgy. 5)	848	848	271	3.10
Biclatan	23,102	23,022	5,892	3.90
Buenavista I	7,274	7,259	1,720	4.20
Buenavista II	11,348	11,314	2,792	4.10
Buenavista III	9,139	9,139	2,289	4.00
Corregidor Pob. (Bgy. 10)	1,121	1,121	317	3.50
Dulong Bayan Pob. (Bgy. 3)	908	908	305	3.00
Gov. Ferrer Pob. (Bgy. 1)	248	248	75	3.30
Javalera	6,267	6,267	2,102	3.00
Manggahan	19,763	19,760	5,908	3.30
Navarro	48,105	47,207	11,915	4.00
Panungyanan	3,746	3,256	886	3.70
Pasong Camachile I	21,493	21,493	5,921	3.60
Pasong Camachile II	40,441	40,441	9,761	4.10
Pasong Kawayan I	7,076	7,076	1,739	4.10
Pasong Kawayan II	56,842	56,842	14,323	4.00
Pinagtipunan	6,917	6,917	1,935	3.60
Prinza Pob. (Bgy. 9)	513	513	179	2.90
Sampalucan Pob. (Bgy. 2)	756	672	223	3.00
San Francisco	83,629	83,577	20,572	4.10
San Gabriel Pob. (Bgy. 4)	1,593	1,593	464	3.40
San Juan I	5,221	5,221	1,585	3.30
San Juan II	6,903	6,903	2,200	3.10
Santa Clara	3,365	3,365	880	3.80
Santiago	39,204	39,204	10,183	3.80
Tapia	4,914	4,914	1,417	3.50
Tejero	8,148	8,144	2,658	3.10
Vibora Pob. (Bgy. 6)	912	883	283	3.10

Source: Philippine Statistics Authority, 2020 Census of Population and Housing

Based on the National Statistical Coordination Board (NSCB) Resolution No. 9 Series of 2003, *Adoption of the Operational Definition of Urban Areas in the Philippines*, approved in 2003 the definition of urban areas recommended by the Technical Committee on Population and Housing Statistics (TCPHS) are as follows: (a) If a barangay has a population size of 5,000 or more, then a barangay is considered urban; or (b) If a barangay has at least one establishment with a minimum of 100 employees, a barangay is considered urban, or; (c) If a barangay has 5 or more establishments with a minimum of 10 employees, and 5 or more

facilities within the two-kilometer radius from the barangay hall, then a barangay is considered urban.

Table 5 presents the distribution of urban and rural barangays in the city. There are 16 barangays categorized as rural in 2015 and decreased to 13 barangays in 2020, where barangays that became urbanized are Barangay Pasong Kawayan I at 80.60% growth rate and San Juan II at 38.87% growth rate. Rural population in 2020 totaled to 24,361 while urban population has 426,222.

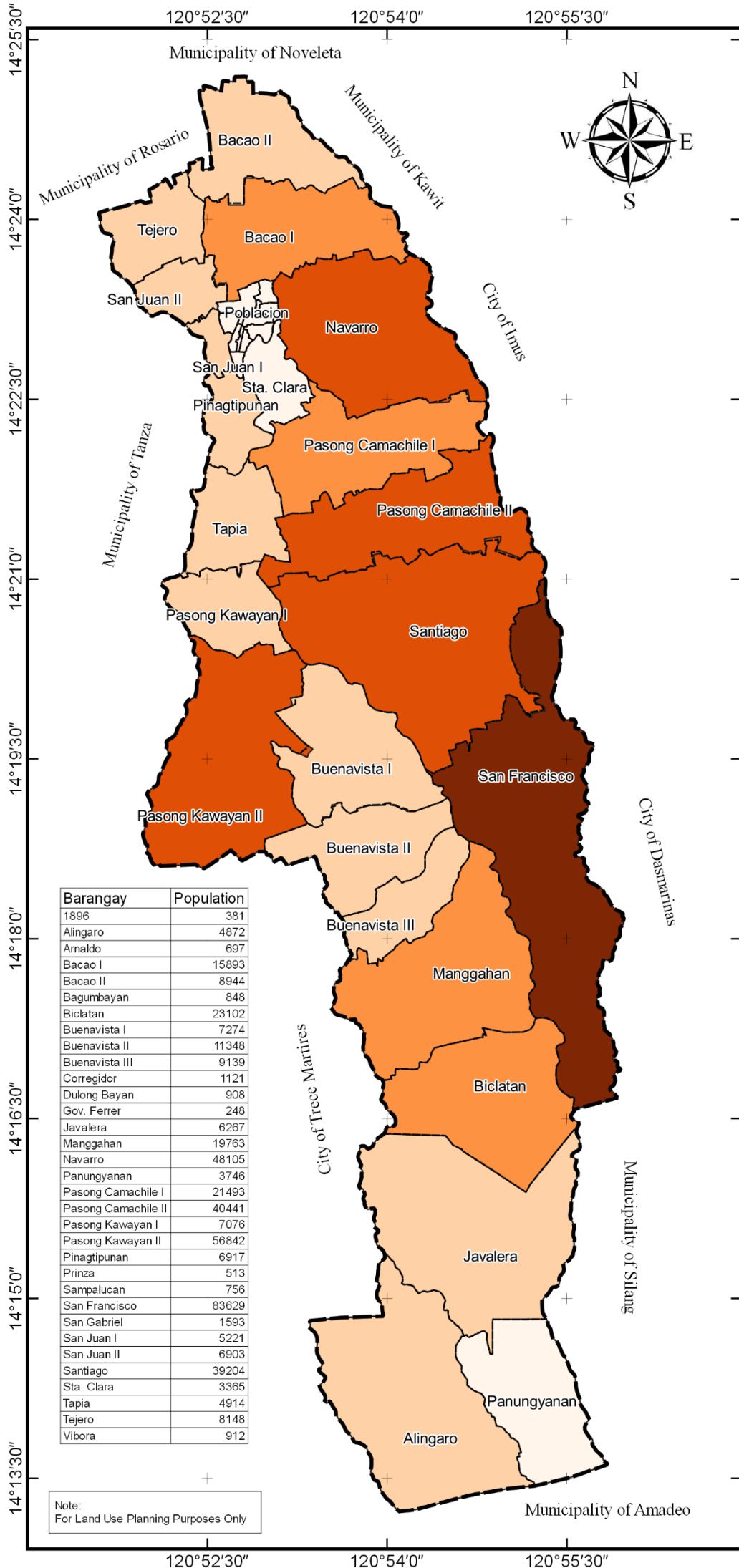
Table 5. Urban-Rural Household Population by Barangay, 2015 and 2020

Name	2015 Population	Urban / Rural (based on 2015 CPH)	2020 Population	Urban / Rural (based on 2020 CPH)
City of General Trias	314,303		450,583	
1896 th Pob.	531	Rural	381	Rural
Alingaro	3,755	Rural	4,872	Rural
Arnaldo Pob.	975	Rural	697	Rural
Bacao I	5,981	Urban	15,893	Urban
Bacao II	7,646	Urban	8,944	Urban
Bagumbayan Pob.	1,044	Rural	848	Rural
Biclatan	14,703	Urban	23,102	Urban
Buenavista I	5,593	Urban	7,274	Urban
Buenavista II	9,902	Urban	11,348	Urban
Buenavista III	8,047	Urban	9,139	Urban
Corregidor Pob.	1,137	Rural	1,121	Rural
Dulong Bayan Pob.	912	Rural	908	Rural
Gov. Ferrer Pob.	276	Rural	248	Rural
Javalera	5,370	Urban	6,267	Urban
Manggahan	15,636	Urban	19,763	Urban
Navarro	14,763	Urban	48,105	Urban
Panungyanan	2,891	Rural	3,746	Rural
Pasong Camachile I	19,906	Urban	21,493	Urban
Pasong Camachile II	31,306	Urban	40,441	Urban
Pasong Kawayan I	3,918	Rural	7,076	Urban
Pasong Kawayan II	27,661	Urban	56,842	Urban
Pinagtipunan	6,809	Urban	6,917	Urban
Prinza Pob.	740	Rural	513	Urban
Sampalucan Pob.	1,144	Rural	756	Rural
San Francisco	74,344	Urban	83,629	Urban
San Gabriel Pob.	1,996	Rural	1,593	Rural
San Juan I	5,386	Urban	5,221	Urban
San Juan II	4,971	Rural	6,903	Urban
Santa Clara	22,727	Urban	3,365	Rural
Santiago	3,495	Rural	39,204	Urban
Tapia	2,643	Rural	4,914	Rural
Tejero	7,024	Urban	8,148	Urban
Vibora Pob.	1,071	Rural	912	Rural

Document Source: Comprehensive Land Use Plan, 2022-2030, Volume 3

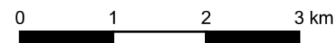
Note: Year 2015 Urban-Rural is categorized based on NSCB Resolution No. 9 S. 2003: Category 1 refers to barangays with population size of 5,000 or more.

Source: Philippine Statistics Authority, 2020 Census of Population and Housing; PSA, Philippine Standard Geographic Code (PSGC)



City of General Trias
Province of Cavite
Region IV-A (CALABARZON)

1:70000

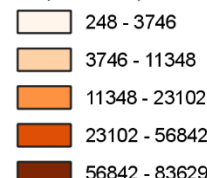


Projection: Transverse Mercator
Geographic Coordinate System: GCS WGS 1984
Datum: D WGS 1984

Population Map
Year 2020

Legend:

Population per Barangay



City Boundary

Barangay Boundary

Prepared By:

City Technical Working Group for
Comprehensive Land Use Plan
(2022-2030)



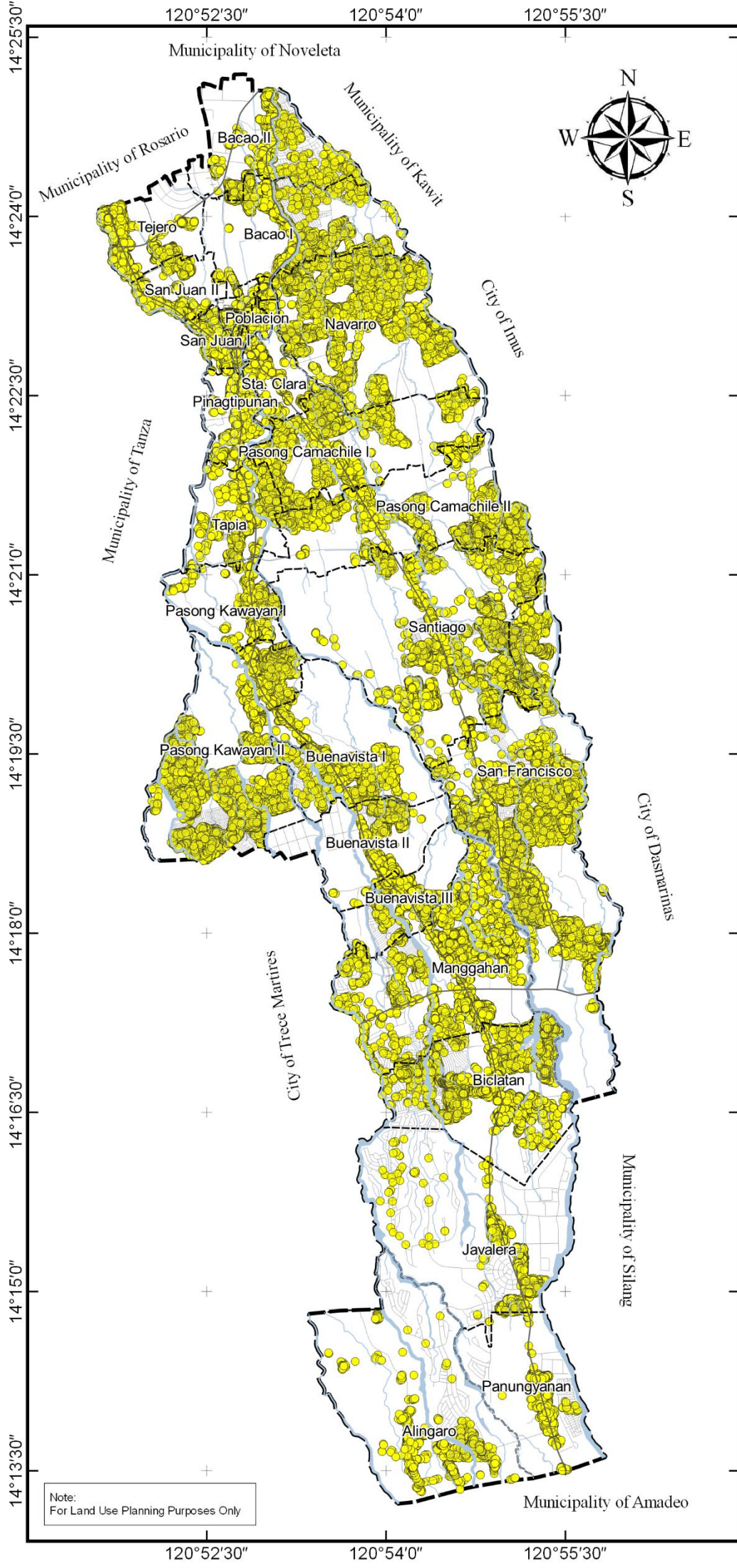
Assisted By:

Department of Human Settlements
and Urban Development
Region IV-A

Sources:

National Mapping and Resource Information
Authority
Philippine Statistics Authority
Google Earth 2021
Office of the City Planning and Development
Coordinator / Zoning Administrator



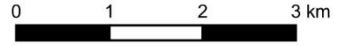


Note:
For Land Use Planning Purposes Only



City of General Trias
Province of Cavite
Region IV-A (CALABARZON)

1:70000



Projection: Transverse Mercator
Geographic Coordinate System: GCS WGS 1984
Datum: D WGS 1984

Household Distribution Map

Legend:

- City Boundary
- Barangay Boundary
- Rivers / Creeks / Canals
- Road Network
- Household

Prepared By:

City Technical Working Group for
Comprehensive Land Use Plan
(2022-2030)

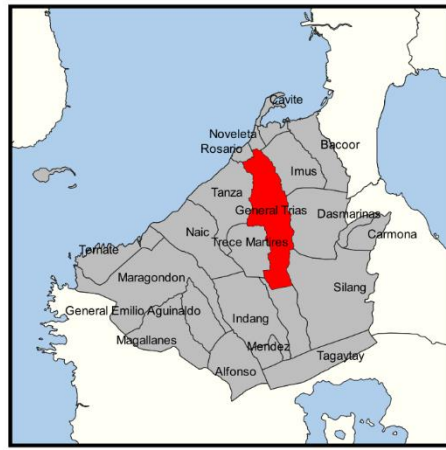


Assisted By:

Department of Human Settlements
and Urban Development
Region IV-A

Sources:

National Mapping and Resource Information
Authority
Community Based Monitoring System 2020-2021
Google Earth 2021
Office of the City Planning and Development
Coordinator / Zoning Administrator



Urbanization Level

The tempo of urbanization is an indicator to express the speed at which an area is moving toward an urban classification. This is calculated by taking the difference between the growth rate of urban population and growth rate of rural population. Barangay populations exceeding 5,000 shall be defined as urban.

The average yearly urban growth rate in 2020 is 10.14% while the average yearly rural growth rate is -4.53%. This yields a tempo of 14.67%.

Year	City Population			Average Yearly Population Growth Rate (%)		Average 5-Year Tempo of Urbanization (%)	Level of Urbanization (%)	
	Urban	Rural	Total	Urban	Rural		City	Provincial
1970	7,308	22,327	29,635	-	-	-	24.66	
1975	7,361	27,446	34,807	0.15	4.59	-4.44	21.15	
1980	8,406	31,339	39,745	2.84	2.84	0.00	21.15	
1990	11,183	41,705	52,888	6.61	6.62	-0.01	21.14	
2000	107,691	0	107,691	172.60	-20.00	192.60	100.00	
2010	207,274	36,048	243,322	18.49	0.00	18.49	85.19	
2015	282,804	31,499	314,303	7.29	-2.52	9.81	89.98	72.02
2020	426,222	24,361	450,583	10.14	-4.53	14.67	94.59	76.91

Notes: (a) Year 2000: As per NSO 2000 Census, General Trias is Urban (All Barangay) and in Category A (Barangay of cities or municipalities which have a minimum population density of 1,000 persons per square kilometer)

(b) Year 2010 and 2015: Urban-Rural is categorized based on NSCB Resolution No. 9 S. 2003: Category 1 refers to barangays with population size of 5,000 or more.

Source: Cavite Ecological Profile, 2021; National Census and Statistics Office, 1970, 1975, 1980, 1990, 2000, 2010 Census; Philippine Statistics Authority, 2015 and 2020 Census

Population Density

In 2015, the population density of the City of General Trias is recorded at 35 persons per hectare. It increased by 16 in five (5) years and reached at 51 persons per hectare in 2020 (see Table 6). Based on the 2020 PSA Census, the most densely populated barangay is San Gabriel with 256 persons per hectare (see Figure 1). It is followed by barangays Arnaldo (at 187 person/has.), Corregidor (at 148 person/has.), San Juan I (at 139 person/has.), Gov. Ferrer (at 126 person/has.).

Barangays Alingaro and Javalera are among the barangays with large land areas, yet they have the lowest population density of 7 and 9 persons per hectare, respectively. These are followed by Barangay Panungyanan which is at 12 persons per hectare. These barangays are situated adjacent to each other at the southernmost portion of the City.

Moreover, they are also classified as agricultural and tourism barangays located in areas with the highest elevation within the city. Despite having the lowest population density, these three (3) barangays are observed to gain significant increase in population from 2015 to 2020.

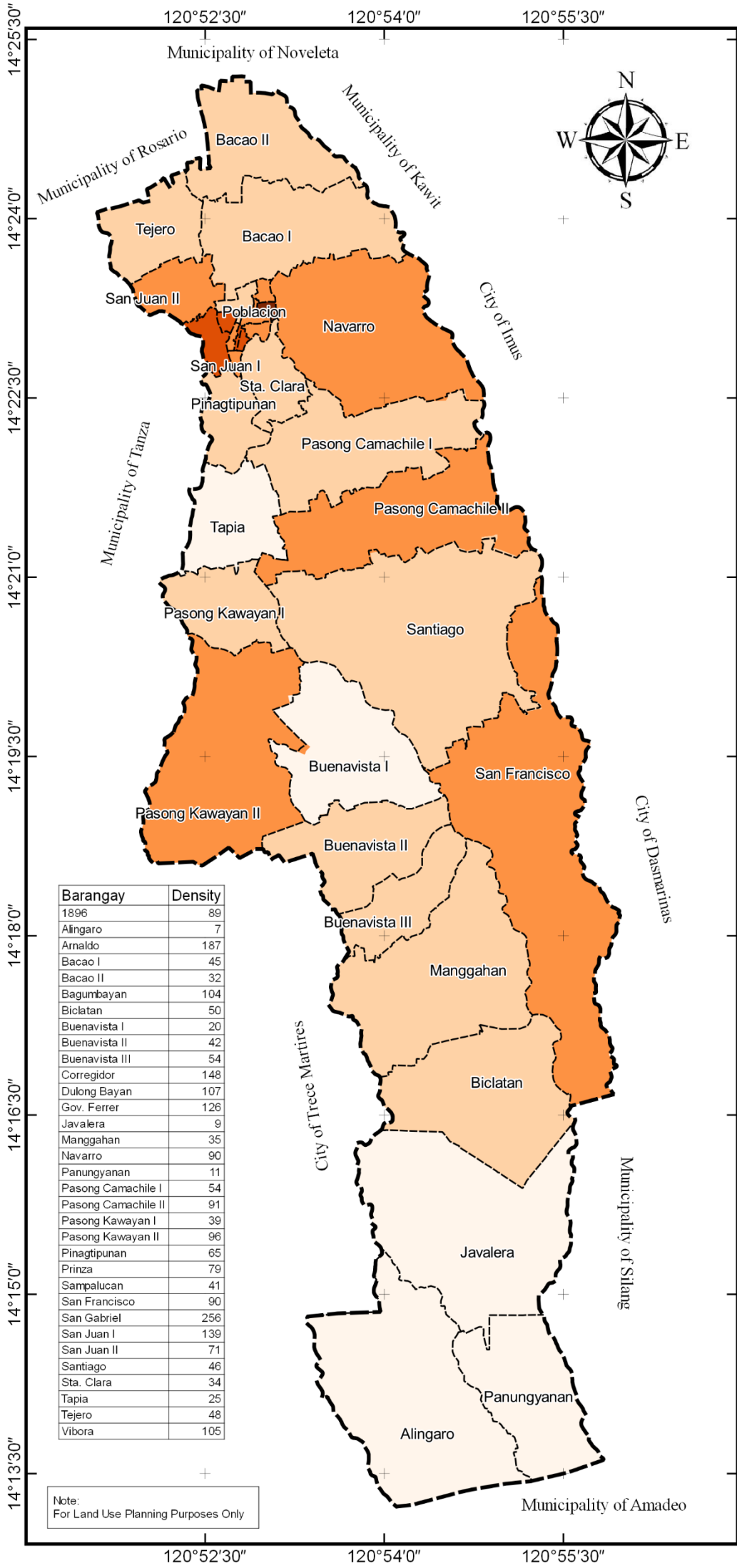
Looking at the geographic distribution depicted in the figure, the concentration of population is located at the outskirts portions of the city. The land area of the least populated barangays is smaller compared to those with large populations. The movement of residents to urban barangays is increasing, leaving out the least populated areas wherein there are few economic opportunities as well.

Document Source: Comprehensive Land Use Plan, 2022-2030, Volume 3

Table 6. Population Density by Barangay, 2020

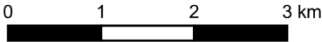
Barangay	Population	Gross Area (ha)	Population Density (Gross Barangay Area)
1896th Pob. (Bgy. 8)	381	4.29	88.81
Alingaro	4,872	678.83	7.18
Arnaldo Pob. (Bgy. 7)	697	3.73	186.86
Bacao I	15,893	355.84	44.66
Bacao II	8,944	282.07	31.71
Bagumbayan Pob. (Bgy. 5)	848	8.14	104.18
Biclatan	23,102	465.76	49.60
Buenavista I	7,274	363.37	20.02
Buenavista II	11,348	268.15	42.32
Buenavista III	9,139	170.23	53.69
Corregidor Pob. (Bgy. 10)	1,121	7.57	148.08
Dulong Bayan Pob. (Bgy. 3)	908	8.47	107.20
Gov. Ferrer Pob. (Bgy. 1)	248	1.97	125.89
Javalera	6,267	698.71	8.97
Manggahan	19,763	571.87	34.56
Navarro	48,105	534.25	90.04
Panungyanan	3,746	327.91	11.42
Pasong Camachile I	21,493	395.21	54.38
Pasong Camachile II	40,441	443.70	91.14
Pasong Kawayan I	7,076	179.65	39.39
Pasong Kawayan II	56,842	593.95	95.70
Pinagtipunan	6,917	106.96	64.67
Prinza Pob. (Bgy. 9)	513	6.49	79.04
Sampalucan Pob. (Bgy. 2)	756	18.46	40.95
San Francisco	83,629	934.09	89.53
San Gabriel Pob. (Bgy. 4)	1,593	6.23	255.70
San Juan I	5,221	37.61	138.82
San Juan II	6,903	97.39	70.88
Santa Clara	3,365	99.68	33.76
Santiago	39,204	846.54	46.31
Tapia	4,914	195.95	25.08
Tejero	8,148	168.32	48.41
Vibora Pob. (Bgy. 6)	912	8.70	104.83
TOTAL	450,583	8890.09	50.68

Source: Philippine Statistics Authority, 2020 Census of Population and Housing; Office of the City Planning and Development Coordinator



City of General Trias
Province of Cavite
Region IV-A (CALABARZON)

1:70000



Projection: Transverse Mercator
Geographic Coordinate System: GCS WGS 1984
Datum: D WGS 1984

Population Density Map
Year 2020

Legend:

- Range
- 7 - 25
 - 25 - 65
 - 65 - 107
 - 107 - 187
 - 187 - 256
- City Boundary
- Barangay Boundary

Barangay	Density
1896	89
Alingaro	7
Arnaldo	187
Bacao I	45
Bacao II	32
Bagumbayan	104
Biclatan	50
Buenavista I	20
Buenavista II	42
Buenavista III	54
Corregidor	148
Dulong Bayan	107
Gov. Ferrer	126
Javalera	9
Manggahan	35
Navarro	90
Panungyanan	11
Pasong Camachile I	54
Pasong Camachile II	91
Pasong Kawayan I	39
Pasong Kawayan II	96
Pinagtipunan	65
Prinza	79
Sampalucan	41
San Francisco	90
San Gabriel	256
San Juan I	139
San Juan II	71
Santiago	46
Sta. Clara	34
Tapia	25
Tejero	48
Vibora	105

Note:
For Land Use Planning Purposes Only

Prepared By:

City Technical Working Group for
Comprehensive Land Use Plan
(2022-2030)

Assisted By:

Department of Human Settlements
and Urban Development
Region IV-A



Sources:

National Mapping and Resource Information
Authority
Philippine Statistics Authority
Google Earth 2021
Office of the City Planning and Development
Coordinator / Zoning Administrator



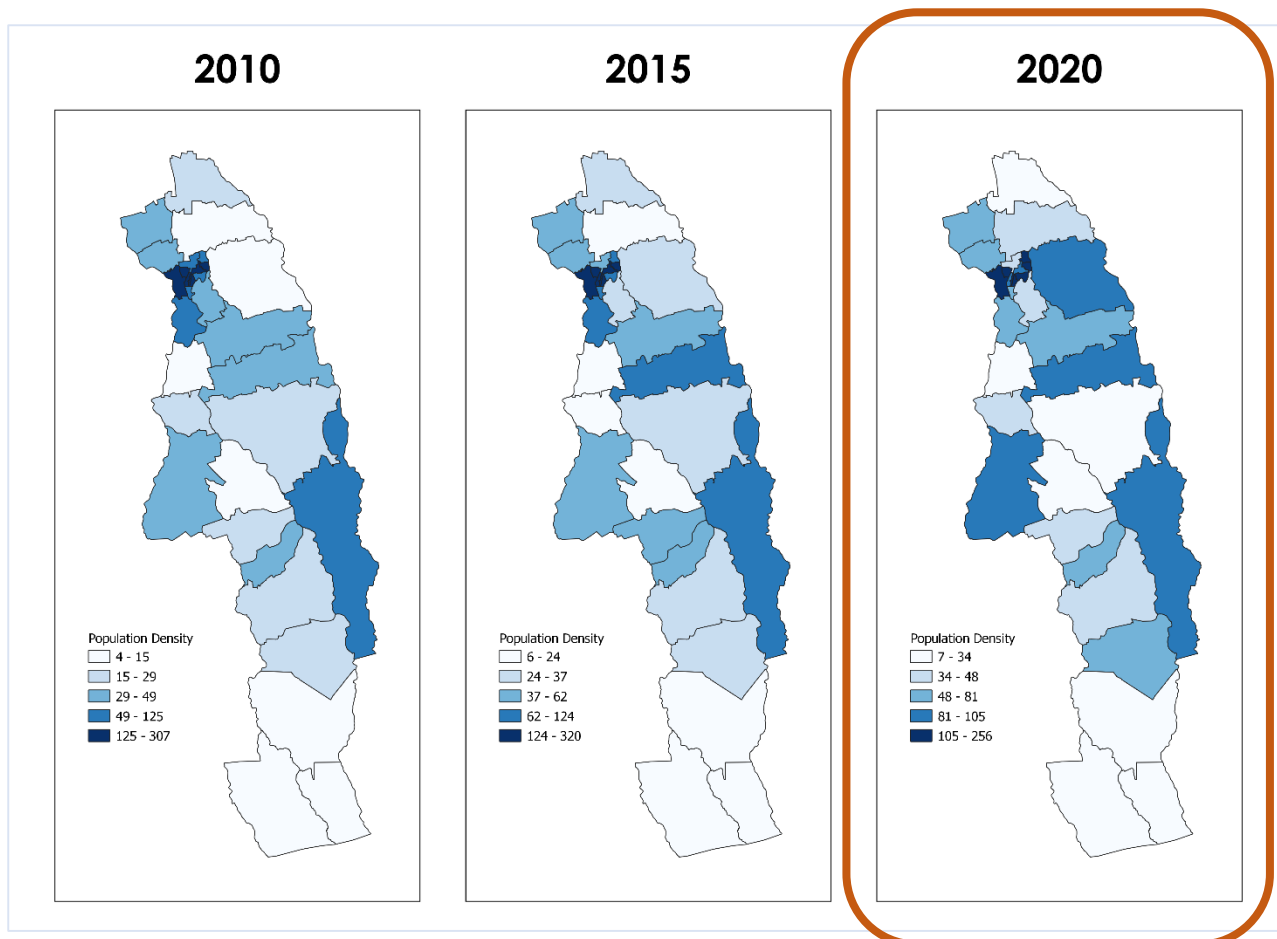


Figure 1. Population Density Map of City of General Trias, 2000-2015

Source: Philippine Statistics Authority, 2020 Census of Population and Housing; National Mapping and Resource Information Authority (NAMRIA); Office of the City Planning and Development Coordinator

Hierarchy of Settlements by Barangay

Based on the 2020 PSA Census on Population, Table 7 presents the hierarchy of most and least populated and dense barangays. Barangay San Francisco as the most populated barangay has a density of not greater than 100 person per hectare among with barangays Pasong Kawayan II, Navarro, Pasong Camachile II and Santiago, being urbanized barangays also. On the other hand, four (4) rural barangays in Población and one (1) urban barangay (San Juan I) are highly dense with greater than 100 person per hectare.

With this, it shows that the most populated barangays are likely to be the center of population in the next coming years. Barangays Tapia, Buenavista I, Santiago are potential to be the nodal growth center having low density of not greater than 25 person per hectare, and possible satellite barangays are Buenavista II and III, Manggahan, and Pasong Kawayan I.

Table 7. Hierarchy of Settlements by Most Populated and Dense Barangay, Least Populated and Dense Barangay, 2020

	Barangay	Population	Density (person/ha)	Urban/Rural
Most Populated Barangay				
1	San Francisco	83,629	90	U
2	Pasong Kawayan II	56,842	96	U
3	Navarro	48,105	90	U

Document Source: Comprehensive Land Use Plan, 2022-2030, Volume 3

	Barangay	Population	Density (person/ha)	Urban/Rural
4	Pasong Camachile II	40,441	91	U
5	Santiago	39,204	46	U
Most Dense Barangay				
1	San Gabriel	1,593	256	R
2	Arnaldo	697	187	R
3	Corregidor	1,121	148	R
4	San Juan I	5,221	139	U
5	Gov. Ferrer	248	126	R
Least Populated Barangay				
1	Gov. Ferrer	248	126	R
2	1896 th	381	89	R
3	Prinza	513	79	R
4	Arnaldo	697	187	R
5	Sampalucan	756	41	R
Least Dense Barangay				
1	Alingaro	4,872	7	R
2	Javalera	6,267	9	U
3	Panungyanan	3,746	11	R
4	Buenavista I	7,274	20	U
5	Tapia	4,914	25	R

Source: Philippine Statistics Authority, 2020 Census of Population and Housing; Office of the City Planning and Development Coordinator